

EXHIBITION 4

Elm Park and Creativity: The Art Group



I like coming to the Art Group because...

...it is a time in the week that I can sit and focus on my art with a fantastic group of like-minded souls



THE MEMBERSHIP OF ELM PARK HAS ALWAYS INCLUDED many people of talent in sporting and also non-sporting activities such as music and art. The Art Group in Elm Park developed from a suggestion in about 1993 by the Entertainments Committee that an Exhibition be held of paintings by members. The Exhibition was organised by Yvonne Burke and Primrose O'Connell with assistance from Pru Anderson and Marie Deignan.



- Pru Anderson with one of her paintings 2014
- Yvonne Ryan (left) with Anne Marie Ryan 2015
- Marie Deignan speaking at the Annual Exhibition 2011
- Primrose O'Connell (in wheelchair) with Terence Sweeney, Iris Taylor



I like coming to the Art Group because...

...it is a quiet peaceful creative space - an oasis in a busy week

The First Exhibition 1994

The first Exhibition was held in 1994 with the agreement of the Secretary General Adrian McCormack "provided that no money changed hands". It was launched by Men's Golf Captain, Denis Hannigan. He asked why no prices were available and why the paintings were not for sale. After consultations it was agreed that this should be changed and paintings have been available for purchase ever since.

I like coming to the Art Group because...
...of the company



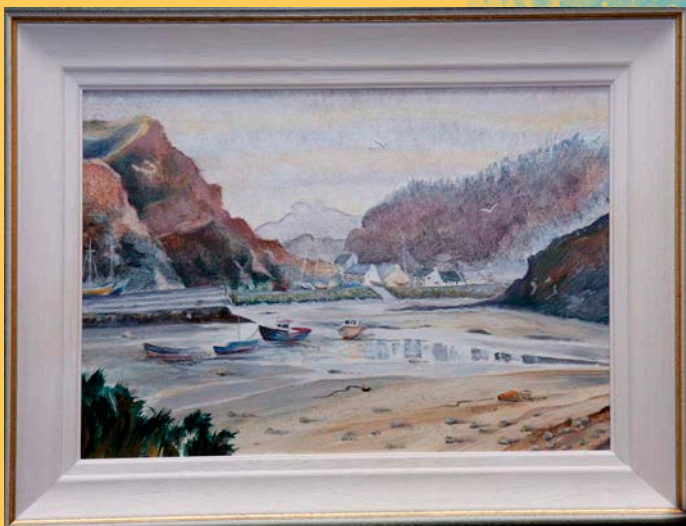
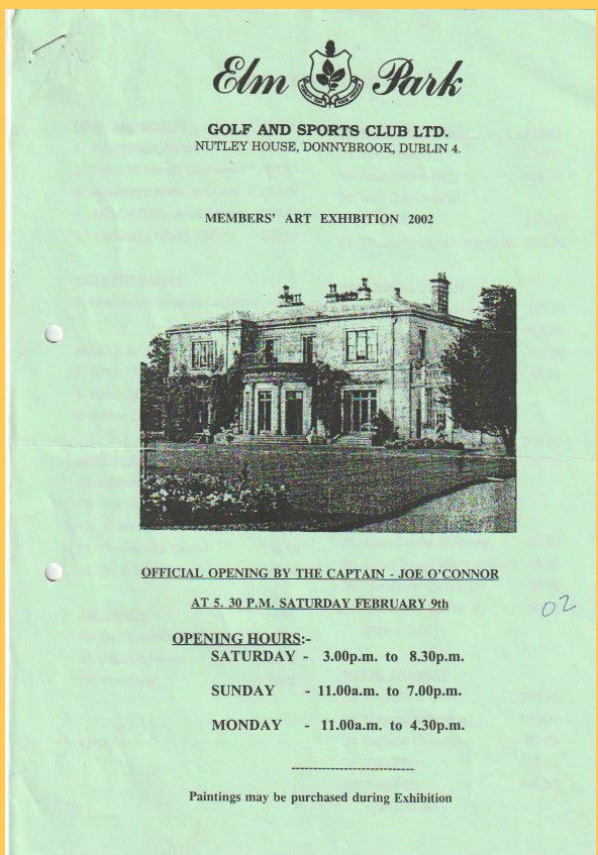
The Display Boards

In 1994 for the first Exhibition, display boards were borrowed from the Arts Council; in 1995, boards were borrowed from another Art Club and stored in members' garages - the Secretary Manager was persuaded to pay for the hiring of a van to collect them; in 1998, Boards were actually manufactured by the Club handyman, Joe O'Brien and these remained in use until the present year (2025) when new modern boards were purchased.



An Annual Event – catalogues and prices

The first Exhibition was so successful, that it was decided to make it an annual event, to be held early in the year. The first catalogue we have extant dates from 1997. It lists the 25 artists and their paintings. In 1998 thirty one artists exhibited 106 paintings ranging in price from £8.00 to £420 for a painting by Carmel Kelly called *Galway Hooker*. This was the highest price paid for a painting until 2007. In 2025 over 120 paintings were exhibited, 38 were sold and the top price was over €700.



EXHIBITION 4

Elm Park and Creativity: The Art Group



I like coming to the Art Group because...
...the company is wonderful, the room is very bright, coffee is a lovely break and I like the discipline on Friday mornings



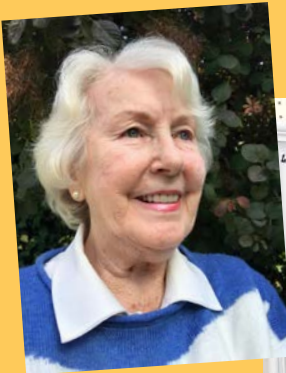
- 2020 President Clive Redford
- 2016 President Liam Byrne
- 2014 President Helen O'Connor
- 2017 Lady Captain Mary Boden



I like coming to the Art Group because...
...a very friendly group of like-minded people people... good company and plenty of help with the drawing and painting

A Period of Slight Struggle

In or about 2015, the numbers attending had declined somewhat for various reasons, mainly age and health-related. Terence Sweeney took over the organisation of the Group and the Exhibition was coordinated by Augusta McCabe and Rosemary Hough and supported especially by Bernie Tighe and Paddy Twohig.



I like coming to the Art Group because...
...I like the company of the people who paint - I am encouraged to keep painting or being a member of the group. The annual exhibition is a great spur to paint with a purpose, and deadline in mind!

- Augusta McCabe
- Rosemary Hough
- Terence Sweeney
- Bernie Tighe and Paul Boxberger



I like coming to the Art Group because...
...I like the quiet space to concentrate and the encouragement of the other artists

A Period of Revival

Artist Don Griffin joined the group in 2019 and initially gave some structured lessons for those who wished to attend. He also offered and still offers support and assistance to all the members at their regular Friday morning sessions.

This model has been followed in recent years with demonstrations sometimes by visiting artists and sometimes by members of the Elm Park Art group with a particular expertise. And the numbers in the Group have increased to almost maximum capacity in 2025.



Art Group 2025



Don Griffin 2025

EXHIBITION 4

Elm Park and Creativity: The Art Group

Being creative –
The Art Group at Work

The Art Group meets on Friday mornings from 10 – 12.30. Conor plays an important role in preparing the function room for the group and he also looks after the provision of essentials such as coffee and tea at the mid morning break.



- Conor in 2011
- Caroline O'Connor
- Frank Mooney
- Anne Corrigan
- Avril Dwyer



I like coming to the
Art Group because...

...once in the group I'm compelled
to get some painting done.
Also I love the cup of tea
and the chat



Spreading their wings –
the Art Group en plein air

The Archive contains some lovely photographs of the Art Group at work en plein air in the (then) Rose Garden at Elm Park in 2007.



I like coming to the
Art Group because...

...it takes place in a beautiful gracious
space wim the sun peeping through
and people who love Art and are friendly
and natural. I love Friday mornings
at Elm Park



I like coming to the
Art Group because...

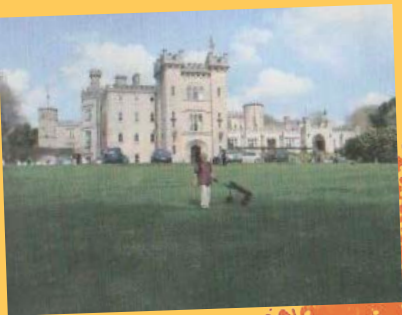
...I am inspired by the artwork of other
members - which is a gift.

I like coming to the
Art Group because...

...of the companionship and the inspiration
it gives. A lovely group of people and very
comfortable surroundings. Mutual
inspiration and enthusiasm.



Cabra Castle
Party 2010



And the source of
all this information?

Handover of Archive In 2020, at the Annual Exhibition, the records built up over 25 years of the Art Group were handed over by Pru Anderson to Rory Spain, Chair of the History and Archives Committee.

